

Preliminary Animal studies showed significant reflux prevention using the Aspisafe tube compared to the normal feeding tube. The study demonstrated no safety concerns with the esophageal balloon. Severe esophageal erosions is the leading cause of gastrointestinal bleeding in ICU patients and is very much correlated with reflux.

Aspisafe NG+

Standard NG tube

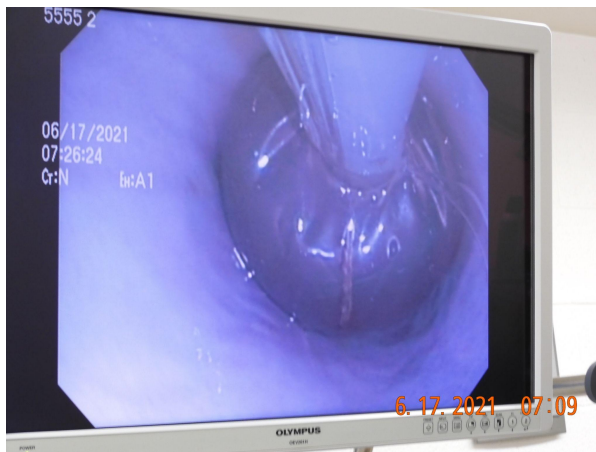


Fig 1



Fig 3

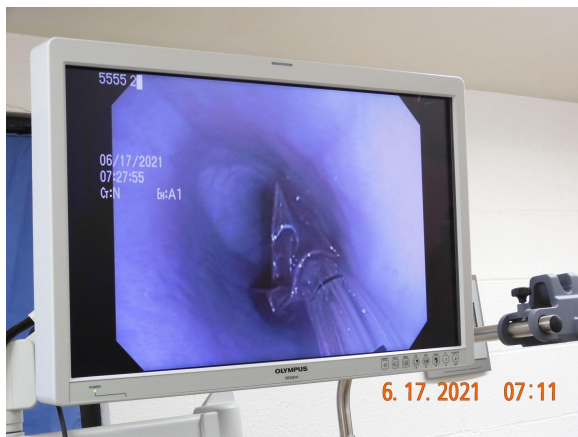


Fig 2



Fig 4

Fig 1-4 showing severe esophagitis and inflammation on the right vs. a clean esophagus on the left on day 2 from animal testing. Fig 1 Balloon inflated. Fig 2 Balloon deflated. Fig 3 & 4 showing severe erosions and inflammation in esophagus using a standard feeding tube.